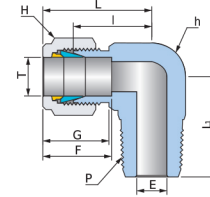
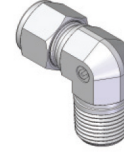


Tube to Male Pipe

Male Elbow

UME



Connects Fractional(Inch) Tube to Female NPT Thread

Part No.	Tube OD T		P NPT	Dimensions (mm)									
	inch	mm		E Min.	h		H		F	G	I	L	L ₁
UME-0101N	1/16	1.68	1/16	1.3	1/2	12.70	5/16	7.93	9.0	11.1	17.0	21.0	17.8
UME-0102N	1/16	1.68	1/8	1.3	7/16	11.11	5/16	7.93	9.0	11.1	15.2	19.2	17.8
UME-0202N	1/8	3.17	1/8	2.3	1/2	12.70	7/16	11.11	12.8	15.4	19.4	26.2	19.8
UME-0204N	1/8	3.17	1/4	2.3	1/2	12.70	7/16	11.11	12.8	15.4	18.0	24.8	23.4
UME-0206N	1/8	3.17	3/8	2.3	11/16	17.46	7/16	11.11	12.8	15.4	22.2	29.0	26.1
UME-0208N	1/8	3.17	1/2	2.3	13/16	20.63	7/16	11.11	12.8	15.4	22.9	29.7	33.0
UME-0302N	3/16	4.76	1/8	3.0	1/2	12.70	1/2	12.70	14.0	16.4	18.8	25.7	18.8
UME-0304N	3/16	4.76	1/4	3.0	1/2	12.70	1/2	12.70	14.0	16.4	18.8	25.7	23.4
UME-0401N	1/4	6.35	1/16	4.8	1/2	12.70	9/16	14.28	15.1	17.4	19.6	26.8	17.8
UME-0402N	1/4	6.35	1/8	4.8	1/2	12.70	9/16	14.28	15.1	17.4	19.6	26.8	18.4
UME-0404N	1/4	6.35	1/4	4.8	1/2	12.70	9/16	14.28	15.1	17.4	19.6	26.8	23.4
UME-0406N	1/4	6.35	3/8	4.8	11/16	17.46	9/16	14.28	15.1	17.4	22.4	29.6	26.2
UME-0408N	1/4	6.35	1/2	4.8	13/16	20.63	9/16	14.28	15.1	17.4	24.4	31.6	33.0
UME-0412N	1/4	6.35	3/4	4.8	1-1/16	26.98	9/16	14.28	15.1	17.4	28.3	35.5	36.8
UME-0502N	5/16	7.93	1/8	6.4	9/16	14.28	5/8	15.87	16.6	18.8	21.3	29.0	19.8
UME-0504N	5/16	7.93	1/4	6.4	9/16	14.28	5/8	15.87	16.6	18.8	21.3	29.0	24.6
UME-0506N	5/16	7.93	3/8	6.4	11/16	17.46	5/8	15.87	16.6	18.8	23.1	30.8	26.2
UME-0602N	3/8	9.52	1/8	7.0	5/8	15.87	11/16	17.46	16.7	18.9	23.1	30.4	20.8
UME-0604N	3/8	9.52	1/4	7.0	5/8	15.87	11/16	17.46	16.7	18.9	23.1	30.4	25.4
UME-0606N	3/8	9.52	3/8	7.0	11/16	17.46	11/16	17.46	16.7	18.9	23.9	31.2	26.2
UME-0608N	3/8	9.52	1/2	7.0	13/16	20.63	11/16	17.46	16.7	18.9	25.9	33.2	33.0
UME-0612N	3/8	9.52	3/4	7.0	1-1/16	26.98	11/16	17.46	16.7	18.9	29.7	37.0	36.9
UME-0802N	1/2	12.70	1/8	10.0	13/16	20.63	7/8	22.22	22.7	21.6	25.9	35.9	23.3
UME-0804N	1/2	12.70	1/4	10.0	13/16	20.63	7/8	22.22	22.7	21.6	25.9	35.9	28.3
UME-0806N	1/2	12.70	3/8	10.0	13/16	20.63	7/8	22.22	22.7	21.6	25.9	35.9	28.3
UME-0808N	1/2	12.70	1/2	10.0	13/16	20.63	7/8	22.22	22.7	21.6	25.9	35.9	33.0
UME-0812N	1/2	12.70	3/4	10.0	1-1/16	26.98	7/8	22.22	22.7	21.6	29.7	39.7	36.8
UME-0816N	1/2	12.70	1	10.0	1-3/8	34.92	7/8	22.22	22.7	21.6	34.6	44.6	46.5
UME-1006N	5/8	15.87	3/8	12.0	15/16	23.81	1	25.40	24.5	22.0	26.9	37.1	30.2
UME-1008N	5/8	15.87	1/2	12.0	15/16	23.81	1	25.40	24.5	22.0	26.9	37.1	34.1
UME-1012N	5/8	15.87	3/4	12.0	1-1/16	26.98	1	25.40	24.5	22.0	29.7	39.9	36.9
UME-1206N	3/4	19.05	3/8	16.0	1-1/16	26.98	1-1/8	28.57	24.4	21.9	29.7	39.8	31.9
UME-1208N	3/4	19.05	1/2	16.0	1-1/16	26.98	1-1/8	28.57	24.4	21.9	29.7	39.8	36.9
UME-1212N	3/4	19.05	3/4	16.0	1-1/16	26.98	1-1/8	28.57	24.4	21.9	29.7	39.8	36.9
UME-1216N	3/4	19.05	1	16.0	1-3/8	34.92	1-1/8	28.57	24.4	21.9	34.5	44.6	46.5
UME-1412N	7/8	22.22	3/4	16.0	1-3/6	30.16	1-1/4	31.75	26.0	22.0	34.5	44.7	41.7
UME-1608N	1	25.40	1/2	22.0	1-3/8	34.92	1-1/2	38.10	31.1	26.1	36.5	48.6	41.9
UME-1612N	1	25.40	3/4	22.0	1-3/8	34.92	1-1/2	38.10	31.1	26.1	36.5	48.6	41.8
UME-1616N	1	25.40	1	22.0	1-3/8	34.92	1-1/2	38.10	31.1	26.1	36.5	48.6	46.5
UME-2016N	1-1/4	31.75	1	27.0	1-11/16	42.86	1-7/8	47.63	40.8	38.5	44.0	65.8	51.3
UME-2020N	1-1/4	31.75	1-1/4	27.0	1-11/16	42.86	1-7/8	47.63	40.8	38.5	44.0	65.8	51.1
UME-2424N	1-1/2	38.10	1-1/2	34.0	2-3/16	55.56	2-1/4	57.15	50.1	45.3	56.4	83.7	64.6
UME-3232N	2	50.80	2	46.0	2-3/4	69.85	3	76.20	69.1	63.5	69.8	107.9	70.6

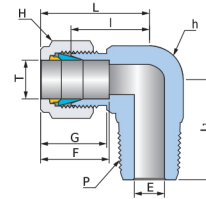
ISO Tapered threads are available for all fractional UME. To order, add "R" as a suffix instead of "N".

Dimensions are for reference only and are subject to change without prior notice.

E is minimum opening. F, G and L are typical finger tight.

Male Elbow

UME



Connects Metric Tube to Female ISO Tapered Thread

Part No.	Tube OD T mm	P ISO7/1	Dimensions (mm)							
			E Min.	h mm	H mm	F	G	I	L	L ₁
UME-M0302R	3	1/8	2.3	12.70	11.11	12.7	15.3	17.0	23.7	17.8
UME-M0304R	3	1/4	2.4	12.70	11.11	12.7	15.3	18.0	24.7	23.4
UME-M0402R	4	1/8	2.3	12.70	12.70	13.7	16.1	18.9	25.4	18.4
UME-M0404R	4	1/4	2.3	12.70	12.70	13.7	16.1	18.9	25.4	23.4
UME-M0602R	6	1/8	4.8	12.70	14.28	15.3	17.6	19.6	27.0	18.4
UME-M0604R	6	1/4	4.8	12.70	14.28	15.3	17.6	19.6	27.0	23.4
UME-M0606R	6	3/8	4.8	17.46	14.28	15.3	17.6	22.4	29.8	26.2
UME-M0608R	6	1/2	4.8	20.63	14.28	15.3	17.6	24.4	31.8	33.0
UME-M0802R	8	1/8	6.4	14.28	15.87	16.3	18.7	21.7	29.3	19.8
UME-M0804R	8	1/4	6.4	14.28	15.87	16.3	18.7	21.7	29.3	24.6
UME-M0806R	8	3/8	6.4	17.46	15.87	16.3	18.7	23.1	30.7	26.2
UME-M0808R	8	1/2	6.4	20.63	15.87	16.3	18.7	25.4	32.9	33.0
UME-M1002R	10	1/8	8.0	17.46	19.05	17.3	19.5	23.9	31.6	21.1
UME-M1004R	10	1/4	7.0	17.46	19.05	17.3	19.5	23.9	31.6	26.1
UME-M1006R	10	3/8	8.0	17.46	19.05	17.3	19.5	23.9	31.6	26.1
UME-M1008R	10	1/2	8.0	20.63	19.05	17.3	19.5	25.9	33.6	33.0
UME-M1202R	12	1/8	9.5	20.63	22.22	22.8	21.7	25.9	36.0	23.6
UME-M1204R	12	1/4	9.5	20.63	22.22	22.8	21.7	25.9	36.0	28.2
UME-M1206R	12	3/8	9.5	20.63	22.22	22.8	21.7	25.9	36.0	28.2
UME-M1208R	12	1/2	9.5	20.63	22.22	22.8	21.7	25.9	36.0	33.0
UME-M1212R	12	3/4	9.5	26.98	22.22	22.8	21.7	29.7	39.8	36.8
UME-M1408R	14	1/2	12.0	23.81	23.81	24.8	22.3	26.9	37.4	34.1
UME-M1508R	15	1/2	12.0	23.81	25.40	24.4	21.9	26.9	36.9	34.1
UME-M1606R	16	3/8	12.0	23.81	25.40	24.5	22.0	27.8	38.0	31.5
UME-M1608R	16	1/2	12.0	23.81	25.40	24.5	22.0	26.9	37.1	34.1
UME-M1612R	16	3/4	12.0	26.98	25.40	24.5	22.0	29.7	39.9	36.9
UME-M1808R	18	1/2	16.0	26.98	30.16	24.5	21.9	29.7	39.9	36.9
UME-M1812R	18	3/4	16.0	26.98	30.16	24.5	21.9	29.7	39.9	36.9
UME-M2008R	20	1/2	16.0	34.92	31.75	26.2	22.1	34.5	44.8	41.7
UME-M2012R	20	3/4	16.0	34.92	31.75	26.2	22.1	36.8	47.1	41.9
UME-M2212R	22	3/4	16.0	34.92	31.75	26.2	22.1	34.5	44.8	41.7
UME-M2512R	25	3/4	22.0	34.92	38.10	31.1	26.1	36.5	48.6	41.7
UME-M2516R	25	1	22.0	34.92	38.10	31.1	26.1	36.5	48.6	46.5
UME-M3020R	30	1-1/4	26.0	46.04	49.21	41.1	38.8	48.3	70.4	53.1
UME-M3220R	32	1-1/4	27.0	46.04	49.21	40.9	38.6	49.3	71.2	53.1
UME-M3832R	38	1-1/2	33.0	55.56	60.32	49.9	45.1	56.4	83.5	60.4

NPT threads are available for all metric UME. To order, add "N" as a suffix instead of "R".

Dimensions are for reference only and are subject to change without prior notice.
E is minimum opening. F, G and L are typical finger tight.